

PHILIPS

Professional Lighting



Professional Lighting
India Trade Catalogue

2020

August, 2020



INDOOR

Contents

03-15 | INDOOR

16-21 | OUTDOOR

22-28 | PROFESSIONAL
LED LAMPS

Smartbrite Batten

Wattage available: 12W, 22W, 36W

Model Number:

BN 021 LED 12S 6500/4000 PSU GR/SI

BN 021 LED 22S 6500/4000 PSU GR/SI

BN 021 LED 40S 6500/4000 PSU GR/SI

Specifications & Features

- Extruded aluminium housing (enhances safety) with high quality Polycarbonate diffuser
- Wide voltage protection range 140-270V
- Available in NW (4000K) & CW (6500K)

MRP: 12W: ₹ 570/-, 22W: ₹ 850/-
36W: ₹ 1499/-

HSN Code: 94051090



Vista Glow

Wattage available: 6.5W

Model Number:

WT140W LED7S CW PSU S1 PC

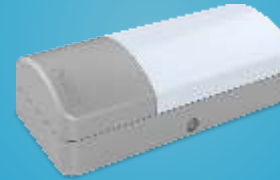
WT140W LED7S NW PSU S1 PC

Specifications & Features

- Pressure die cast housing
- Long life: 25,000 burning hours
- IP65-Protection against dust & water with IK08 (Vandal Proof)
- >105 Lumen/Watt (6.5W/700lm)

MRP: ₹ 999/-

HSN Code: 94051090



Essential Smartbright Waterproof

Wattage available: 16W & 34W

Model Number:

WT150C LED 20S 6500/4000 PSU L120

WT150C LED 40S 6500/4000 PSU L120

Specifications & Features

- System efficacy >120lm/W – Energy saving 55% compared with conventional.
- Suspended & Surface Mounted
- IP65, effectively prevent dusts & moisture from luminaire to assure the performance for long term
- Multiple lumen packs 2000/4000 lm and CCT's 4000/6500K
- Superior Quality Of Polycarbonate Co-extrusion housing that provides IK08 Impact Resistance

MRP: 16W: ₹ 2,800/-
34W: ₹ 3,800/-

HSN Code: 94054090

4



Endura Led Bulk Head

Wattage available: 6w ,10w

Model Number:

WT202W LED 6S CW PSU S3 PC

WT202W LED10S CW PSU S3 PC

Specifications & Features

- High ingress protection-IP66
- Impact resistant-IK09
- Compact integral design
- Color temperature - 4000K / 6500K and Lumen packs - 700 lm /1100 lm
- Pressure diecast housing with robust polycarbonate cover
- External mounting through simple tools
- Long lifetime: 50000 Hrs.

MRP: 6W - ₹ 2,000/-
10W - ₹ 2,200/-

HSN Code: 94054090



Sleek Surface

Wattage available: 6W, 12W, 15W & 18W
Model Number:
SM250 & SM251 (Circular)
SM260 & SM261 (Square)

Specifications & Features

- Surface/Wall mounted LED downlight for multipurpose utility
- Available in Round and Square with a LL color temperature CW, NW & WW
- Long life: 30,000 burning hours
- Available in 750lm, 1200lm, 1600lm & 2000lm
- Surge protection of 2.5KV with wide voltage protection range 140V-270V

MRP: 6W: ₹ 1,100/-, 12W: ₹ 1,200/-
15W: ₹ 1,750/-, 18W: ₹ 1,950/-

HSN Code: 94051090



Cirrus Mini Pro

Wattage available: 12W & 20W
Model Number:
SM200C LED16S 6500/4000 PSU OD WH
SM200C LED11S 6500/4000 PSU OD WH

Specifications & Features

- Surface mounted (312mm×312mm×45mm) LED light to replace 2×18W & 2×26W CFL surface mounted downlights
- Available in 12W: 1100lm and 20W:1600lm
- Surge protection of 3KV with wide voltage protection range 140V-270V
- Long life: 50,000 burning hours
- Available in (NW) 4000K & (CW) 6500K

MRP: 12W: ₹ 2,550/-, 20W: ₹ 3,100/-

HSN Code: 94051090



Smartbrite Surface

Wattage available: 32W
Model Number:
SM270C LED 30S 6500 PSU WH
SM270C LED 30S 4000 PSU WH

Specifications & Features

- 32W Surface mounted 4'x1' LED light to replace 2x36W TLD & 2x28W TL5 4'x1' light
- Available in 32W: 2900lm
- Long life: 50,000 burning hours and CRI >80
- Mounting options: surface/ conduit/ suspended
- Available in (NW) 4000K & (CW) 6500K

MRP: ₹ 5,500/-

HSN Code: 94051090



Coreline 300

Wattage available: 14W & 17W
Model Number:
RC375B LED15S/865 PSU W30L30 PCV IN
RC375B LED15S/840 PSU W30L30 PCV IN
RC375B LED12S/865 PSU W30L30 PCV IN
RC375B LED12S/840 PSU W30L30 PCV IN

Specifications & Features

- Recessed mounted (300mm x 300mm) LED light to replace 2x18W & 2x26W CFL recessed light
- Available in 14W: 1200lm and 17W:1500lm
- Long life: 25,000 burning hours
- Edge lit LED panel with two color temperature of (NW) 4000K & (CW) 6500K

MRP: 14W: 1,850/-, 17W: 1,950/-

HSN Code: 94051090



Greensquare

Wattage available: 30W

Model Number:

RC140B P LED30S-6500 L60W60 PSU
WH OD
RC140B P LED30S-4000 L60W60 PSU
WH OD

Specifications & Features

- New Elegant recessed LED Luminaire (595mm x 595mm) with uniform light distribution, perfect replacement of 4x14W & 2x36W CFL conventional Light
- System lumen efficacy of 100 lumen/Watt (30W/3000lm)
- Long life: 25,000 burning hours
- Available in (NW) 4000K & (CW) 6500K

MRP: ₹ 3,600/-

HSN Code: 94051090



Coreline Panel

Wattage available: 33W & 40W

Model Number:

RC375B LED30S/865 PSU W60L60 S2 WH
RC375B LED30S/840 PSU W60L60 S2 WH
RC375B LED36S/865 PSU W60L60 S2 WH
RC375B LED36S/840 PSU W60L60 S2 WH

Specifications & Features

- 33W & 40W fully diffused recessed mounted LED luminaire (595mm x 595mm) to replace 4x14W or 2x36W CFL conventional light
- Extruded aluminum housing, 8.2 mm depth only
- Edge lit LED panel with light output of 3000lm & 3600lm
- Long life: 25,000 burning hours and easy to install
- Available in (NW) 4000K & (CW) 6500K

MRP: 33W: ₹ 3,800/-, 40W: ₹ 4,200/-

HSN Code: 94051090



Essential full glow LED

Wattage available: 30w ,36 w

Model Number:

RC360BLED30S-4000/6500V1L60W60
PSUOD
RC360BLED36S-4000/6500V1L60W60
PSUOD

Specifications & Features

- High Uniformity & CRI>80
- Efficacy 100 lm/W
- Compact integral design
- Multiple Lumen Packs & CCT Suiting Different Applications and Heights
- Super Slim With Just 35mm Depth Inside Ceiling
- 25000 hrs

MRP: 30W - ₹ 3,000/-

MRP: 36W - ₹ 3,200/-

HSN Code: 94054090



Troffer

Wattage available: 24W, 30W

Model Number:

RC370BLED30S-6500/4000G5L60W60
PSUOD
RC370BLED36S-6500/4000G5L60W60
PSUOD

Specifications & Features

- Fully diffused recessed mounted LED luminaire (595mm x 595mm) to replace 4x14W or 2x36W CFL conventional light
- Backlit LED luminaire with uniform light distribution & light output of 3000lm
- Higher life class: 25,000 burning hour
- Available in (NW) 4000K & (CW) 6500K

MRP: ₹ 4,000/-

HSN Code: 94051090



Coreline Panel

Wattage available: 33W

Model Number:

RC375B LED30S/865 PSU W30LI20 S2 WH
RC375B LED30S/840 PSU W30LI20 S2 WH

Specifications & Features

- 33W fully diffused recessed mounted LED luminaire (297mm x 1197mm) to replace 2x28W or 2x36W T8 conventional light
- Extruded aluminum housing, 8.2mm depth only
- Edge lit LED panel with light output of 3000lm
- Long life: 25,000 burning hours and easy to install
- Available in (NW) 4000K & (CW) 6500K

MRP: ₹ 4,200/-

HSN Code: 94051090



Essential Smartbright Track Light

Wattage available: 8W,14W,23W,35W

Model Number:

STO30T LED8 8W 220-240V I NB/MB WH/BK
STO30T LED12 14W 220-240V I NB/MB WH/BK
STO30T LED20 23W 220-240V I NB/MB WH/BK
STO30T LED30 35W 220-240V I NB/MB WH/BK

Specifications & Features

- Versatile : Full range of lumen output from 800 lm to 3000 lm
- Flexible : 3 Color Temperatures (3000K/4000K/5000K) to meet different applications
- Better Beam Control : One piece of lens design without using reflector
- 85 lm/W System Efficacy,
- 20,000(L70B50) burning hours lifetime, hassle-free solution for up to 5 years
- Aluminum housing : Better thermal management

MRP: 8W: ₹ 1,750/-, 14W: ₹ 2,000/-

23W: ₹ 2,250/-, 23W: ₹ 2,500/-



10 **HSN Code:** 94051090

SkySpot COB

Wattage available: 7W, 12W, 18W & 22W

Specifications & Features

- Metal heat sink for durable performance
- Strong focused beam, 36° beam
- Long life: 30,000 burning hours
- Wide voltage protection (160V-360V)/ Surge protection up to 2KV
- Ideal for retail showrooms, hospitality, offices
- 7W/R: Cutout: 72mm, WW: 475lm, CW: 495lm
- 12W/R: Cutout: 85mm, WW: 820lm, CW: 850lm
- 18W/R: Cutout: 102mm, WW: 1370lm, CW: 1390lm
- 22W/R: Cutout: 102mm, WW: 1800lm, CW: 1810lm

MRP: 7W(R): ₹ 1,295/-, 12W(R): ₹ 1,745/-
18W(R): ₹ 2,590/-, 22W(R): ₹ 2,995/-

HSN Code: 94051090



AccentSpot

Elegant Tiltable Spot

Wattage available: 30W

Specifications & Features

- Elegant tiltable spot with a strong focused beam
- 36 degree beam angle
- Premium material - aluminum die cast housing & heat sink for durable performance
- Long life with 30,000 burning hours
- Ideally designed for commercial use/ retail showrooms and hospitality
- Available in 30W, Round, 3000K, 4000K & 6500K
- Cut Out: 120mm | CRI > 80 | PF > 0.9
Lumen: 2250

MRP: 30W: ₹ 3,995/-

HSN Code: 94051090



SkyCove LED Strip

Wattage available: 28W

Specifications & Features

- 28W/5m: 2150lm, 240V, 50Hz
- Comes with driver
- Available in WW, CW & NW
- 48 LEDs per meter
- Long life: 20,000 burning hours
- Ideal for cove lighting

MRP: ₹ 1,540/-

HSN Code: 94051090





SkyGlow Downlighter

Wattage available: 6W, 12W & 18W

Specifications & Features

- Matte diffuser for uniform light spread
- >70 lumens per watt
- 6W: 450lm, Cutout (mm) R/S: 75
- 12W: 840lm, Cutout (mm) R/S: 110
- 18W: 1350lm, Cutout (mm) R/S: 140
- Available in Warm White (WW) , Cool White (CW) & Neutral White (NW)
- Available in Round & Square shape
- Wide voltage protection (160V-360V)
- Surge protection up to 2KV
- Long life: 30,000 burning hours
- BIS safety standards registered



MRP: 6W: ₹ 535/-, 12W: ₹ 760/-
18W: ₹ 1,020/-

HSN Code: 94051090

GreenLED Plus

Wattage available: 7.5W, 12.5W, 15W & 18W
Model Number: DN/171B/DN176B LED 6S
DN/172B/DN177B LED 10S/12S/15S

Specifications & Features

- Pressure die cast aluminum housing for better heat dissipation, ensuring long life
- Available in Round and Square with CW, NW & WW color temperature
- Long life: 30,000 burning hour & easy to install
- Surge protection of 2.5KV with wide voltage protection range 140V-270V

HSN Code: 94051090



Model No.				Cutout		
Round	Square	Wattage	Lumen	R/S	MRP	
DN171 6S	DN176 6S	7.5W	600lm	115mm/103mm	₹ 760/-	
DN172 10S	DN177 10S	12.5W	1000lm	165mm/148mm	₹ 960/-	
DN172 12S	DN177 12S	15W	1200lm	165mm/148mm	₹ 1,060/-	
DN172 15S	DN177 15S	18W	1500lm	165mm/148mm	₹ 1,160/-	

OUTDOOR



Essential Smartbright Flood

Wattage available: 10W & 20W
Model Number:
BVP131(10W) & BVP132(20W)

Specifications & Features

- Up to 85% energy saving compared with Philips Halogen lamps flood light
- Die cast Aluminum Housing; CRI:70
- Anti Glare: High quality honeycomb pattern light diffuser
- Robust Driver, Wide operating voltage 100V-240V
- Easy to install and maintain, CCT: 3000K, 4000K & 6500K
- 80 lumen/watt system efficacy

MRP: 10W: ₹ 900/-, 20W: ₹ 1,200/-

HSN Code: 94054090

Essential Smartbright Flood

Wattage available: 30W,
Model Number:
BVP161 LED30 CW/NW/WW PC WB

Specifications & Features

- PDC housing with IP65 flood light optics
- Efficient high output LED for direct replacement of conventional flood lights upto 70W
- Available in Warm White, Neutral White & Cool White
- IP65, IK07

MRP: 30W: ₹ 2,650/-

HSN Code: 94054090





Essential Smartbright Flood

Wattage available: 50W
Model Number:
 BVP140 LED50 CW/NW/WW PC WB

Specifications & Features

- Energy Efficient - >100 lm/w
- Service on Site : Potted Driver, safer & easily serviceable
- Robust- Pressure Die Cast Housing & IK07 strength
- Heat Sink designed for better Heat dissipation
- IP65 ,SurgeProtection – 4kv
- Pdc housing with ik07 protection.

MRP: 50W - ₹ 5,000/-

HSN Code: 94054090



Greenline Smart

Wattage available: 15W, 25W
Model Number:
 BRP040 LED 15 CW R1 S1 PSU GR
 BRP042 LED 25 CW R1 S1 PSU GR

Specifications & Features

- Energy Efficient - >100 lm/w
- Service on Site : Potted Driver, safer & easily serviceable
- Robust- Pressure Die Cast Housing & IK07 strength
- Finless design with better street lighting optics
- Heat Sink designed for better Heat dissipation
- IP65 ,SurgeProtection – 4kv
- Pdc housing with ik07 protection.

MRP: 15W : ₹ 1,850/-, 25W : 3,000/-

HSN Code: 94054090

Essential Smartbright Flood

Wattage available: 70W, 100W
Model Number:
 BVP141 LED70 CW/NW/WW PC WB
 BVP142 LED100 CW/NW/WW PC WB

Specifications & Features

- Energy Efficient - >100 lm/w
- Service on Site : Potted Driver , safer & easily serviceable
- Robust- Pressure Die Cast Housing & IK07 strength
- Versatile- – Multiple Lumen Packs & CCT Suiting Different Applications Long Life
- Heat Sink designed for better Heat dissipation
- Potted driver
- IP65 ,Surge Protection – 4kv

MRP: 70W: ₹ 7,000/-, 100W: ₹ 9,500/-

HSN Code: 94054090



Essential Smartbright Street

Wattage available: 35W, 45W, 70W
Model Number:
 BRP030 LED 35 CW SLR GR PSU
 BRP031 LED 45 CW SLR GR PSU
 BRP032 LED 70 CW SLR GR PSU

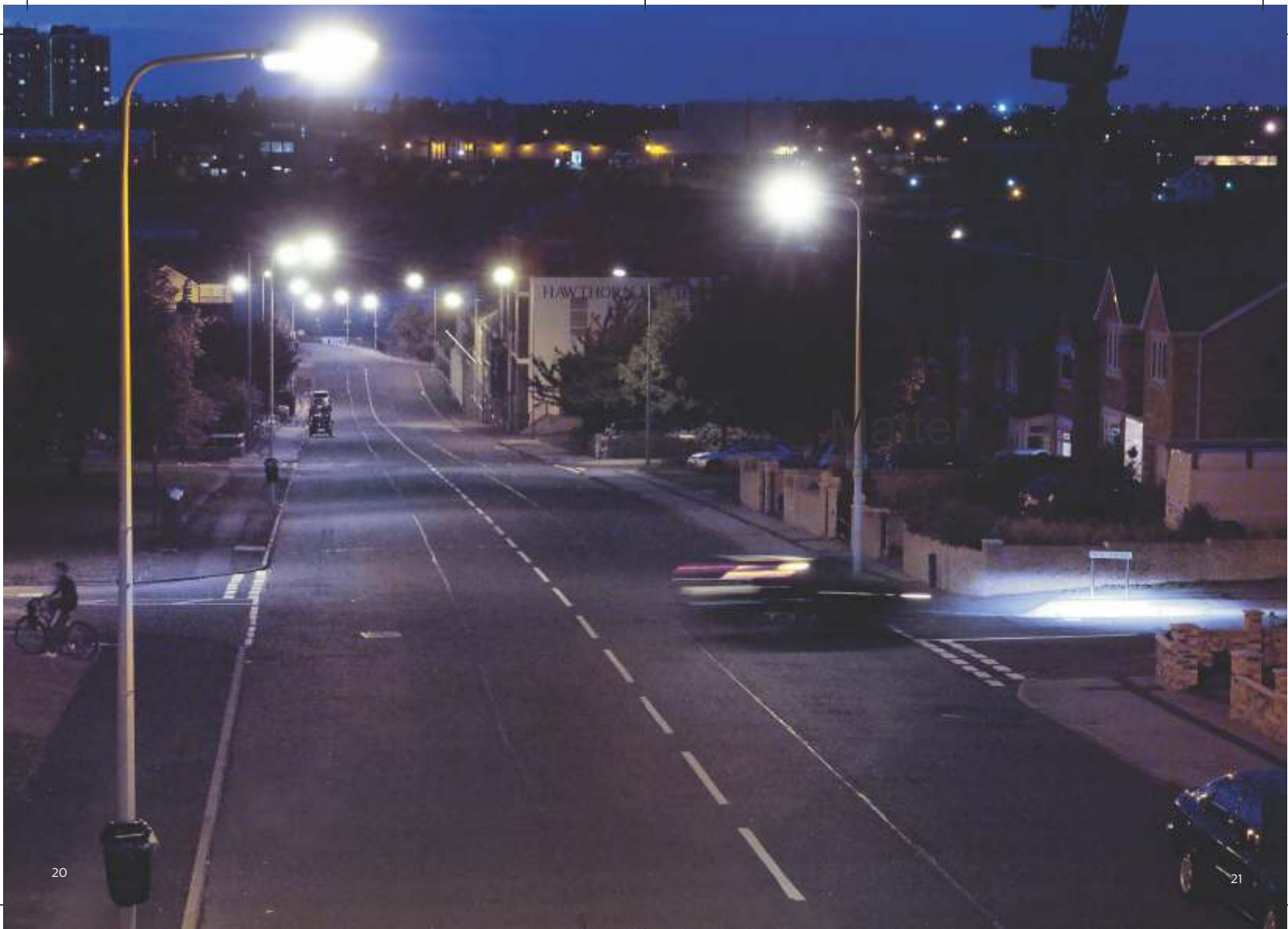
Specifications & Features

- Robust Pressure Die Cast Housing, ik07
- Efficacy 100lm/w
- Multiple Lumen Packs for different road widths
- Dedicated Street light optics
- Heat Sink designed for better Heat dissipation
- IP65, with 4kv surge protection

MRP: 35W : ₹ 3,500/-, 45W : 5,000/-
 70W : 7000/-

HSN Code: 94054090





PROFESSIONAL LED LAMPS



LED Tube

Highly Efficient LED PC Tubelights

Wattage available: 18W

Model Number:

MAS LED tube 18W 1800lm 865 T8

Specifications & Features

- Polycarbonate housing in opal finish provides glare free uniform light distribution
- Available in 18W: 1800lm
- Long Life 30000 burning hours
- Inbuilt aluminum heat sink hence more durable
- Surge Protection- 3KV

MRP: 700/-

HSN Code: 85395000



LED Tube

Highly Efficient LED PVC Tube light

Wattage available: 18W

Model Number:

MASTER LEDtube 18W 2100Lm 865 T8 (PC)

Specifications & Features

- Polycarbonate housing in opal finish provides glare free Uniform lighting distribution
- Available in 18W: 2100Lm
- 40000 burning hours
- Surge Protection -3KV

MRP: Price on Request

HSN Code: 85395000



LED Tube

Highly Efficient LED Glass Tubelight

Wattage available: 20W

Model No.: Essential LED tube 1200mm
20W 865 T8 IND

Specifications & Features

- Perfect replacement of existing 1200mm T8 fluorescent tubelight fixtures
- Available in 20W/2100lm
- Long life: 25,000 burning hours
- Surge Protection- 2.5KV

MRP: ₹ 400/-

HSN Code: 85395000



MAS LEDtube

Highly Efficient LED PC Tubelights

Wattage available: 30W

Model Number:
MAS LEDtube 30W 4000lm 865 T8

Specifications & Features

- Available in 30W: 4000 lm
- Long Life 40000 burning Hours
- Inbuilt aluminum heat sink hence more durable
- Surge Protection- 3KV

MRP: ₹ 1,499/- (Only LEDtube)
₹ 1,699/- (With Batten)

HSN Code: 85395000



LED Spot MR16

Wattage available: 4.5W

Specifications & Features

- 4.5W: 400lm
- Long life: 15,000 burning hours
- 3000K & 6500K
- Case size: 10 pcs
- No driver required

MRP: ₹ 299/-

HSN Code: 85395000



GU10 Kit

Wattage available: 4.6W

Specifications & Features

- 4.6W – 380 lm in 2700K, 420 lm in 4000K & 6500K
- Color Temperature - 2700K, 4000K, 6500K
- Long Life - 15000 Hours
- Case Size - 10 pcs
- Housing Options - Square, Round

MRP: ₹ 470/-

HSN Code: 85395000



LED Spot GU10

Wattage available: 4.6W

Specifications & Features

- 4.6W: 400lm
- Long life: 15,000 burning hours
- 3000K/6500K
- Case size: 10 pcs

MRP: ₹ 299/-

HSN Code: 85395000



Tforce

Wattage available: 27W, 37W, 47W & 67W

Specifications & Features

- High Efficacy: >105 Lumen/Watt , (120 Lumen/Watt for 67W)
- Surge Protection: >2.5 KV
- Lifetime: 15000 Hours/ >10 Yrs (Assuming 4 hours/day & 365 days usage)
- Pleasant White Light With CRI 80
- High Power Factor >.9
- Wide Operating Voltage Range – 100V-300V
- B22 & E27 Cap Options

MRP: ₹ 799/- onwards

HSN Code: 94054090



LED PLL

Wattage available: 18W

Specifications & Features

- 18W: 1700lm
- Long life: 15,000 burning hours
- 6500K
- Case size: 20 pcs

MRP: ₹ 599/-

HSN Code: 85395000



TForce with accessories

Wattage available: 27W, 37W & 47W

Specifications & Features

- Highly Durable & Long Life E27 & E40 Holders for High Bay Lamps
- Light Weight, High Quality, High Reflectivity Reflector Housings in 12" & 16" Diameter

MRP: E27 lamp holder: ₹ 1,000/-

E40 lamp holder: ₹ 1,100/-

12inch lamp reflector: ₹ 1,450/-

16inch lamp reflector: ₹ 1,800/-

HSN Code: 94059900





True Force Highbay

Wattage available: 160W

Specifications & Features

- High lumen output: 20,000lm
- 6500K
- Wide beam and narrow beam options
- Case Size: 2 pcs
- Suitable for very high ceiling applications in industry and retail

MRP: ₹ 9,999/-

HSN Code: 85395000





